

## H-CP & 130 H-CP Resin Constructed Filter Housing

**Broad Chemical Compatibility**

H-CPP&130H-CPP Filter Housing Series constructed of 100% natural Polypropylene without any coloring agents or chemicals. These housings provide broad chemical compatibility and are ideally suited for food&beverage, ultrapure water, and other high purity chemical applications.

### Typical Applications

- HCl
- Pharmaceutical Industry
- Deionized Water, Alcohol, Solvents



### Design Features

H-CPP Filter Housings are compatible with Ø68mm and Ø83mm filter cartridges

- 130H-CPP Filter Housings are compatible with Ø130mm filter cartridges
- Able to use filter cartridges with SOE (222/226) endcap configurations

### Materials of Construction

Housing Body	PP/PVDF/MABS/PFA
Closure Cap	PP/PVDF(PFA)
Spanner	PVC/PP
Sealing	EPDM/FEP/FKM/FFKM(PFA)
Closure Nut	PP

### Operation Conditions

Max Operation Temperature	30°C (MABS/PC housing) 40°C (PP/PVDF housing)
Max Operation Pressure	<b>MABS/PC housing</b> 0.4 Mpa@20°C 0.3 MPa@30°C <b>PP/PVDF housing</b> 0.6 Mpa@25°C 0.4 MPa@40°C <b>PFA housing</b> 0.75MPa/25°C 0.30MPa/100°C

### Cartridge Specification

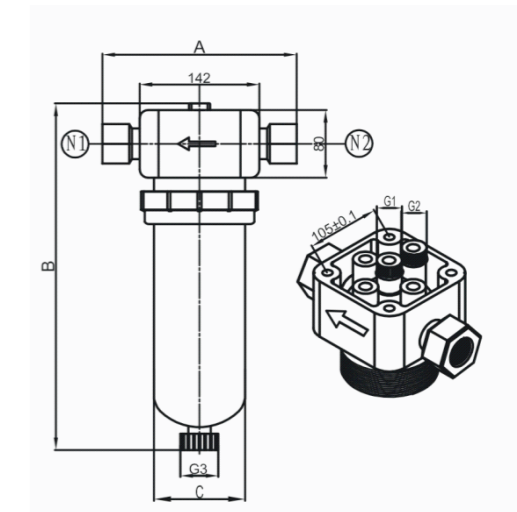
Number	1
Diameter	68mm/83mm/130mm
Length	10"/ 20"

### Maximum Flow Rate

Filter Length	Max. Flow Rate(LPM) - Water
10 inch	15
20 inch	30

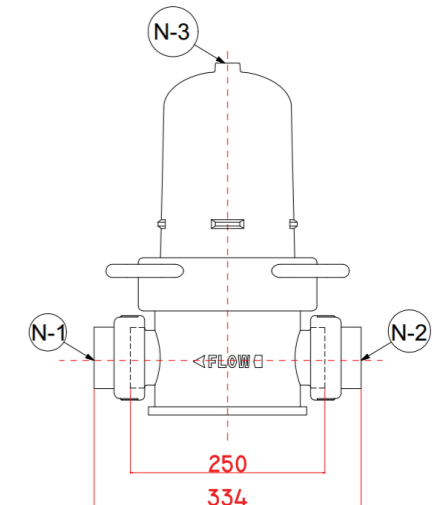
## 83/68

Inlet / Outlet (N1/N2)	3/4"NPT, 1"NPT 1"union, 1-1/2"union (JIS Standard)	222 226
Vent (G1/G2)	3/8"NPT	
Drain (G3)	1/4"NPT	
Inlet / Outlet Distance(A)	229.5mm	
Height (B)	10"=419mm 20"=677mm	
Body Diameter (C)	104mm	



## 130

Inlet / Outlet (N1/N2)	40A/50A/65A	334
Drain (N3)	1/4"NPT	
Drain (G3)	1/4"NPT	
Height (A)	334mm	
Height (B)	10"=430mm	
Body Diameter (C)	104mm	



### Ordering Information

	Housing Body	Length of Filter	Code	Inlet/Outlet	Sealing Material	Application
HCP	<b>P</b>	<b>10</b>	<b>C</b> 222	<b>A</b> 3/4"NPT <b>B</b> 1"NPT <b>N</b> DIN25 <b>C</b> 1"union <b>D</b> 1-1/2"union <b>B</b> 1"NPT	<b>E</b>	<b>P</b> Pharmaceutical <b>F</b> Food and Beverage <b>C</b> Chemical
	<b>M</b>	<b>20</b>				
	<b>C</b>					
	<b>V</b>				<b>C</b> 222	
130HCP	<b>P</b>	<b>10</b>	<b>N</b> 334	<b>E</b> 40A <b>F</b> 50A <b>G</b> 65A	<b>E</b> EPDM <b>K</b> FFKM	
HCP	<b>A</b> PFA	<b>10</b>	<b>C</b> 222	<b>C1</b>	<b>K</b> FFKM	<b>P</b> Pharmaceutical <b>F</b> Food and Beverage <b>C</b> Chemical
		<b>20</b>				





## H-SICF Multi-Round Industrial Filter Housing

### Pre-RO Guard Housing

Cobetter H-SICF Filter Housing designed for use in pre-filtration and clarification processes for beverage including drinking water, fine chemicals, pharmaceutical, and other industrial applications. Constructed of 304 or 316L stainless steel, the housing also has a mechanically polished surface finish and can accept filter cartridges with DOE, 222 or 226 end connections, as well as cartridges in 10", 20", 30", or 40" configurations.

In addition, it features a swing bolt closure at the top of the filter housing for easy access and installation. Mirror finishing and internal polishing of 0.6µm Ra are ensured by mechanically polishing the filter housing 5 to 7 times.



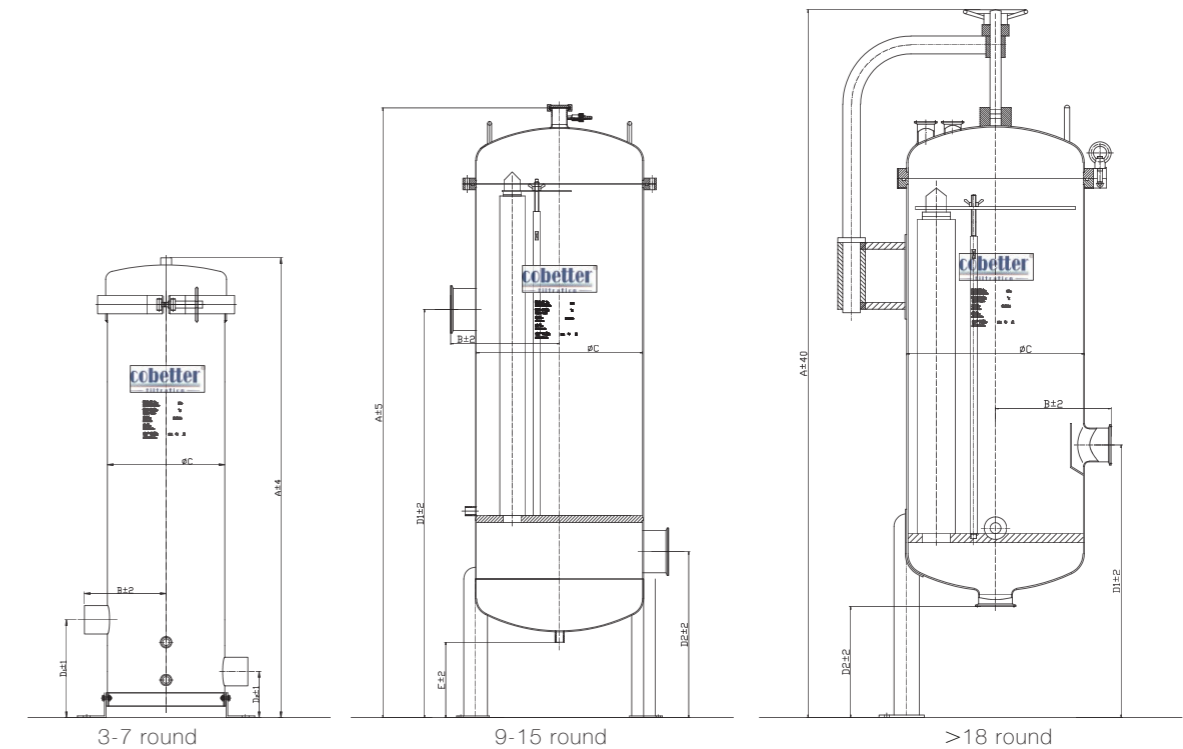
## Material of Construction

Housing Body	304;316L
Vent / Drain	304;316L
Clamp / Swing Bolt	304
Leg	304
O-ring/Gaskets	Silicon, Viton, EPDM

## Connection

Body Connection	Swing Bolt / C-Clamp / NPT
Inlet / Outlet	Clamp / Flange
Vent	G1/2"(<12round) ; G1"(>15round)
Drain	G3/4"(<12round) ; G1"(>15round)
Pressure Gauge	M14*1.5

## Drawings & Dimensions



	3 round			5 round		7 round		11 round		15 round		18 round		24 round	
	20"	30"	40"	30"	40"	30"	40"	30"	40"	30"	40"	30"	40"	30"	40"
A	777	1027	1277	1027	1277	1037	1287	1396	1646	1463	1713	1710	1960	1720	1970
B	132	132	132	132	132	155	155	215	215	240	240	240	240	290	290
C	204	204	204	204	204	250	250	350	350	400	400	400	400	500	500
D1	170	170	170	170	170	170	170	961	961	980	980	635	635	660	660
D2	125	125	125	125	125	125	125	360	360	400	400	250	250	250	250

## Design Features

- Mirror polishing; Internal polishing 0.6µm Ra; Sanitary grade requirement
- Use of spring to hold filters in place when installed



## Surface Finish

Polish Type	Mirror Polish
Surface Option	Internal Ra: 0.6µm; External Ra: 0.8µm

## Operating Conditions

Max. Operating Pressure	0.6Mpa ( 6bar ) / 1.0Mpa ( 10bar )
Max. Operating Temperature	90°C (194°F) / Design Temperature: 140°C

## Ordering Information

H-SICF	Number of Filters	Filter Length	Material	End Cap	Housing Connection	Inlet / Outlet	Sealing Material	Surface Finish	Design Pressure	Application
	<u>3</u>	<u>30</u>	<u>F</u>	<u>S</u>	<u>D</u>	<u>T38</u>	<u>S</u>	<u>A</u>	<u>X</u>	<u>P</u>
	<b>03</b> 3 round	<b>10</b> 10 inch	<b>F</b> 304	<b>P</b> DOE	<b>D</b> Swing Bolt	<b>T38</b> Tri-clamp DN38 (3-Elements)	<b>S</b> Silicon	<b>A</b> Mirror Polish	<b>X</b> 0.6MPa	<b>P</b> Pharmaceutical
	<b>05</b> 5 round	<b>20</b> 20 inch	<b>S</b> 316L	<b>S</b> 226	<b>C</b> C-Clamp	<b>T50</b> Tri-clamp DN50 (7-12elements)	<b>E</b> EPDM		<b>Y</b> 1.0MPa	<b>F</b> Food and Beverage
	<b>07</b> 7 round	<b>30</b> 30 inch		<b>T</b> 222	<b>L</b> NPT	<b>F32</b> Flange DN32 (3-Elements)	<b>V</b> Viton			<b>C</b> Chemical
	<b>09</b> 9 round	<b>40</b> 40 inch		<b>J</b> DOE&222		<b>F40</b> Flange DN40 (7-12elements)	<b>P</b> PTFE			
	<b>11</b> 11 round						<b>P</b> Encapsulated Viton			
	<b>12</b> 12 round									
	<b>15</b> 15 round									
	<b>18</b> 18 round									
	<b>...</b>									
	<b>75</b> 75 round									

