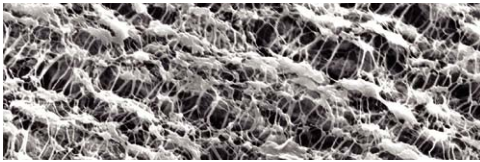


TefloFlow® HT Filter Cartridges

Hydrophobic PTFE / Hydrophilic PTFE Membrane · Sterilizing Grade

Cobetter **TefloFlow® HT** Filter Cartridges are composed of a hydrophilic PTFE membrane, polyphenylsulfide (PPS) support layers, and oxidation stabilized polypropylene hardware. This filter is recommended for sterile filtration of liquids in critical high temperature applications or filtration of ozonized water. The cartridge is also available with hydrophobic PTFE media upon request



Trap/Pre-Filtration

Microbiological Stabilization

Gas Filtration

Additional Filters

Features and Benefits

- Oxidation-resistant materials provide longer service life in critical air and vent applications
- Exceptionally high flow rates at low pressure drops
- Robust construction offers outstanding stability during steam sterilization
- Wide chemical compatibility
- Complies with Food Contact Regulations: FDA 21CFR177-182 and 1935/2004 EC

Materials of Construction

Filter Media	TFHTI (Hydrophilic PTFE Membrane) TFHT (Hydrophobic PTFE Membrane)
Cage/Support	Polyphenylenesulphide (PPS)
Core/End Caps	Polypropylene (High antioxidant formulation)



Oxidation-resistant Materials

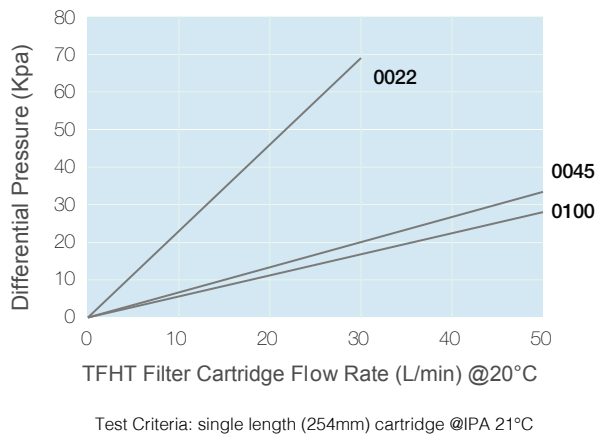
Ozonated Water Filtration & Ozonated-water for Venting



Operating Conditions

Max. Temperature	100°C for 12 months 110°C for 6 months 120°C for 12 months
Max. Differential Pressure	4.0 bar / 21°C (forward flow) 2.4 bar / 90°C (forward flow)
Bubble Point	HSLPFI: BP > 0.32 MPa(water) , 0.22 µm
Pre-wetting Process	Soak in purified water@30°C for 2h
Steam Sterilization <small>(Saturated Steam)</small>	145°C/30min @ Max. Differential Pressure of 0.3bar
Cleaning Solution	2% NaOH Solution @ ≤ 65°C
Effective Filtration Area	0.75m ² / Φ 69-10 inch

Flow Rate Characteristics



Ordering Information

TFHT	Removal Ratings	End Cap	Nominal Length	Seal Material	-F
[Hydrophobic PTFE]					
TFHTI	0005 =0.05µm	DOE =Double Open End	05 = 5"	S =Silicone	
[Hydrophilic PTFE]	0010 =0.1 µm	HTC =222 O-ring/Flat (PBT Insert)	10 =10"	E =EPDM	
	0022 =0.22µm	HTF =222 O-ring/Fin (PBT Insert)	20 =20"	V =Viton	
	0045 =0.45µm	HSF =226 O-ring/Fin (PBT Insert)	30 =30"		
	0100 =1.0 µm	SSF =226 O-ring/Fin (SS Insert)	40 =40"		
	0500 =5.0 µm	SSC =226 O-ring/Flat (SS Insert)			
		STF =222 O-ring/Fin (SS Insert, 3 Tabs)			