

# BevClear® XL Filter Cartridges

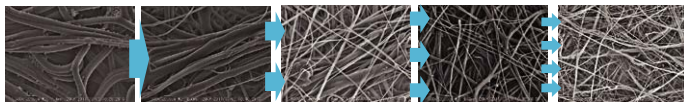
Multi-layer Polypropylene Media · Pre-filtration

Cobetter **BevClear® XL** are composed of an all-polypropylene construction. The pleated depth filter cartridge with a graded pore size distribution from coarse (upstream) to fine (downstream) captures particles gradually which improves filter service life. Filter characteristics include higher dirt loading capacity and removal of contaminants (including particulates, colloids, and gels).

Trap/Pre-Filtration

## Features and Benefits

- Graded pore size (5-7 layers of PP media) enables additional particle loading and higher dirt holding capacity



- Eliminates particles according to pore size distribution which significantly increases filter lifetime
- All-polypropylene construction yields excellent compatibility
- Complies with Food Contact Regulations: FDA 21CFR177-182 and 1935/2004 EC

Microbiological Stabilization

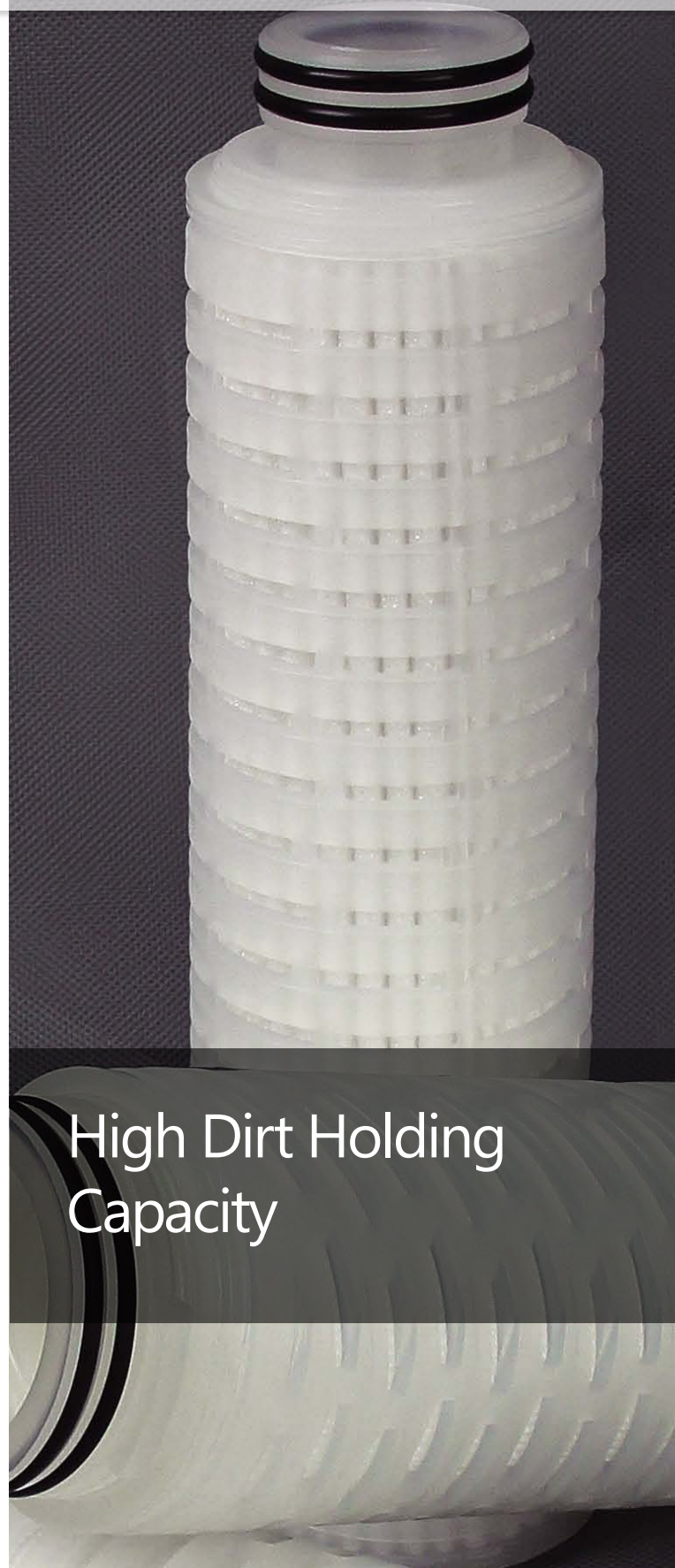
Gas Filtration

Additional Filters

## Materials of Construction

<b>Filter Media</b>	Multi-Layer Polypropylene
<b>Cage/Support</b>	Polypropylene
<b>Core/End Caps</b>	Polypropylene

High Dirt Holding Capacity

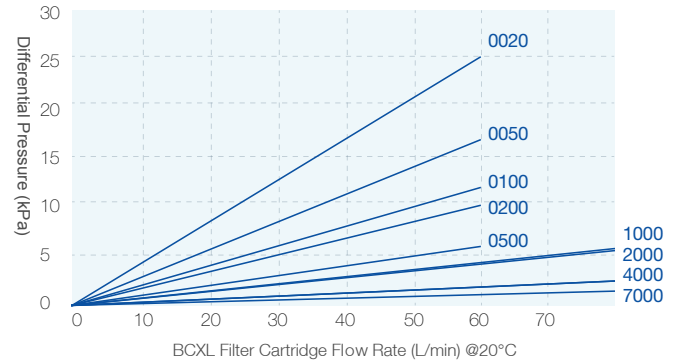




## Operating Conditions

<b>Max. Temperature</b>	80°C
<b>Max. Differential Pressure</b>	5.0 bar / 21°C (forward flow) 2.0 bar / 80°C (forward flow) 2.0 bar / 21°C (reverse flow)
<b>Steam Sterilization</b> (Saturated Steam)	≥20 cycles (121°C/30 min @ Max.Differential Pressure of 0.5 bar)
<b>Hot Water Sterilization</b>	85°C/30 min @ Max.Differential Pressure of 2.0 bar
<b>Cleaning Solution</b>	2% NaOH Solution @ ≤ 65°C
<b>Effective Filtration Area</b>	0.23m <sup>2</sup> / Φ71-10 inch

## Flow Rate Characteristics



## Retention Rates

BCXL	Retention Rates (%)						
	1.0µm	2.0µm	5.0µm	10.0µm	20µm	40µm	70µm
0020	≥99.90	≥99.90	≥99.90	≥99.99	≥99.99	≥99.99	≥99.99
0050	≥99.00	≥99.50	≥99.90	≥99.90	≥99.99	≥99.99	≥99.99
0100	≥98.00	≥99.00	≥99.50	≥99.90	≥99.98	≥99.99	≥99.99
0200		≥98.00	≥99.00	≥99.50	≥99.90	≥99.98	≥99.99
0500			≥98.00	≥99.00	≥99.50	≥99.90	≥99.98
1000				≥98.00	≥99.00	≥99.50	≥99.90
2000					≥98.00	≥99.00	≥99.50
4000						≥98.00	≥99.00
7000							≥98.00

Tested by ISO 12103-1 A4 Coarse Test Dust

## Ordering Information

BCXL	Removal	End Cap	Nominal Length	Seal Material	-F
[Φ71]	0050=0.5µm	DOE=Double Open End	05 = 5"	S=Silicone	
	0080=0.8µm	HTC=222 O-ring/Flat (PBT Insert)	10 =10"	E=EPDM	
	0100=1.0µm	HTF =222 O-ring/Fin (PBT Insert)	20 =20"	V=Viton	
	0300=3.0µm	HSF =226 O-ring/Fin (PBT Insert)	30 =30"		
	0500=5.0µm	SSF =226 O-ring/Fin (SS Insert)	40 =40"		
		SSC =226 O-ring/Flat (SS Insert)			
		STF =222 O-ring/Fin (SS Insert, 3 Tabs)			