

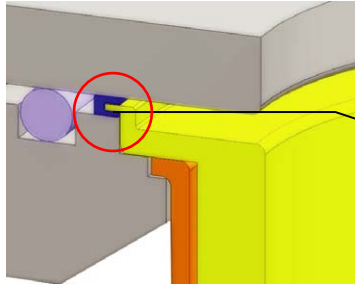
BevClear® HFB Filter Cartridge

Perfect Replacement of Filter Bags

Cobetter **BevClear® HFB** Filter Cartridges are designed to replace filter bags. The outside diameter is equal to standard filter bags with cartridge body outside diameter of 160mm and endcap outside diameter of 180mm.

In addition, the filtration area is 8x times greater than the filtration area

of filter bags. They can fit most Size 1 and Size 2 bag housings without an adaptor to enhance your filtration.



Trap/Pre-Filtration

Microbiological Stabilization

Gas Filtration

Additional Filters

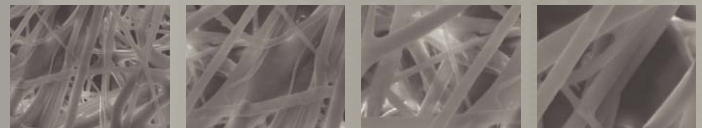
Features and Benefits

- Fits most Size 1 and Size 2 bag housings with no hardware adaptors.
- Unique sealing design ("O" O-Ring + "U" O-Ring) ensures no leakage and adjusts to fit most bag filter housings.
- Large filtration area and gradient pore structure ensure high flow rates and longer life time.
- Outside Net Structure of PET improves construction stability
- Quick and easy change-out.

Applications

- Food & Beverage
- Water Treatment

← FLOW



Materials of Construction

Filter Media	Polypropylene
Support/Drainage	Polypropylene
Endcap	Glass Filled Polypropylene
Endcap O.D.	184mm
Filter O.D.	160mm
Length	Size 1 (330mm); Size 2 (660mm)

Operating Conditions

Length	Design Flow Rate	Maximum Flow Rate	Filtration Area
Size 1	10m ³ /hr	25m ³ /hr	1.8m ²
Size 2	20m ³ /hr	50m ³ /hr	3.65m ²

Recommended Change-out Differential Pressure	1.0bar @ 21°C (from inside to out)
Max. Operating Differential Pressure	3.5bar @ 21°C (from inside to out)
Max. Operating Temperature	80 °C/176°F(Hot Water Sanitization/Sterlization: 77-80 °C/20min)

Ordering Information

BCHFB	Endcap Style	Filter Media	Removal Ratings	Nominal Length	Seal Material	-F
	Blank= Standard	PP	0150=1.5µm	01=Size1 (330mm)	E=EPDM	
	F= Extendable Neck	GF	0200=2µm	02=Size 2(660mm)		
			0500=5µm			
			1000=10µm			
			2000=20µm			
			4000=40µm			
			7000=70µm			
			9000=90µm			