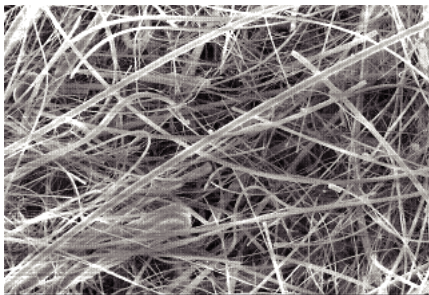


# BevClear® GF Plus Filter Cartridges

Glass Fiber Media · Particle Removal

Cobetter **BevClear® GF Plus** Filter Cartridges are composed of positive Zeta modified microfiber media and ideal for the removal of contaminants such as colloids, yeast, and particles in brewing applications. This advanced media has higher dirt holding capacity combined with efficiency. The filter is characterized by high particle efficiency compared to other polypropylene filters.



Trap/Pre-Filtration

Microbiological Stabilization

Gas Filtration

Additional Filters

## Features and Benefits

- High dirt holding capacity and excellent particle retention.
- Ideal for the retention of colloids
- Low pressure drop and high flow rates and long service life
- Excellent chemical compatibility

## Materials of Construction

<b>Filter Media</b>	Glass Micro Fiber
<b>Cage/Support</b>	Polypropylene (Nanofiber)
<b>Core/End Caps</b>	Polypropylene



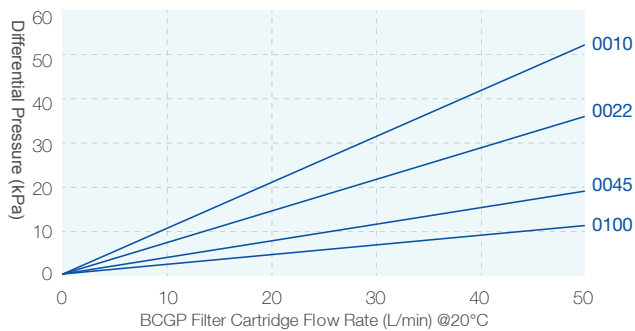
Bioburden Reduction



## Operating Conditions

<b>Max. Temperature</b>	80°C
<b>Max. Differential Pressure</b>	5.0 bar / 21°C (forward flow) 2.0 bar / 80°C (forward flow) 2.0 bar / 21°C (reverse flow)
<b>Steam Sterilization</b> (Saturated Steam)	≥20 cycles (121°C/30 min @ Max. Differential Pressure of 0.5 bar)
<b>Hot Water Sterilization</b>	85°C/30 min @ Max. Differential Pressure of 2.0 bar
<b>Cleaning Solution</b>	2% NaOH Solution @ ≤ 65°C
<b>Effective Filtration Area</b>	0.26m <sup>2</sup> / Φ71-10 inch

## Flow Rate Characteristics



## Ordering Information

BCGP	Removal Ratings	End Cap	Nominal Length	Seal Material	-F
[Φ71]	0020=0.2 μm	DOE=Double Open End	05= 5"	S=Silicone	
	0025=0.25 μm	HTC =222 O-ring/Flat (PBT Insert)	10=10"	E=EPDM	
	0045=0.45 μm	HTF =222 O-ring/Fin (PBT Insert)	20=20"	V=Viton	
	0080=0.8 μm	HSF =226 O-ring/Fin (PBT Insert)	30=30"		
	0100=1.0 μm	SSF =226 O-ring/Fin (SS Insert)	40=40"		
	0300=3.0 μm	SSC =226 O-ring/Flat (SS Insert)			
	0500=5.0 μm	STF =222 O-ring/Fin (SS Insert, 3 Tabs)			