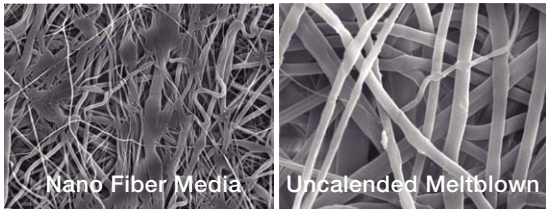


BevClear® AB Filter Cartridges

Absolute Rated Polypropylene Media · Particle Removal

Cobetter **BevClear® AB** Filter Cartridges, composed of a polypropylene media, are absolute-rated with high dirt holding capacity, long service and high flow rates. This type of media provides absolute and reliable efficiency for particle retention in beverage filtration.



Trap/Pre-Filtration

Microbiological Stabilization

Gas Filtration

Additional Filters

Features and Benefits

- Super fine nanofiber media provides excellent particle retention and bio-burden reduction from liquids
- Absolute-rated to ensure high efficiency and dirt holding capacity
- Complies with Plastic Class VI standard
- Complies with Food Contact Regulations: FDA 21CFR177-182 and 1935/2004 EC

Materials of Construction

Filter Media	Multi-Layer Melt Blown Polypropylene
Cage/Support	Polypropylene
Core/End Caps	Polypropylene



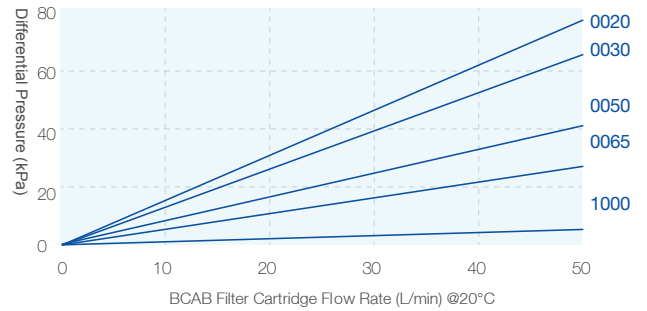
Particle & Bioburden
Reduction



Operating Conditions

Max. Temperature	80°C
Max. Differential Pressure	5.0 bar / 21°C (forward flow) 2.0 bar / 80°C (forward flow) 2.0 bar / 21°C (reverse flow)
Steam Sterilization (Saturated Steam)	≥20 cycles (121°C/30 min @ Max.Differential Pressure of 0.5 bar)
Hot Water Sterilization	85°C/30 min @ Max.Differential Pressure of 2.0 bar
Cleaning Solution	2% NaOH Solution @ ≤ 65°C
Effective Filtration Area	0.53m ² / Φ71-10 inch

Flow Rate Characteristics



Retention Rates

	Retention Rates (%)							
	1.0µm	3.0µm	4.0µm	5.0µm	6.0µm	7.0µm	10µm	20µm
BCAB0020	≥99.99	≥99.99	≥99.99	≥99.99	≥99.99	≥99.99	≥99.99	≥99.99
BCAB0030	≥99.98	≥99.99	≥99.99	≥99.99	≥99.99	≥99.99	≥99.99	≥99.99
BCAB0050	≥99.90	≥99.98	≥99.99	≥99.99	≥99.99	≥99.99	≥99.99	≥99.99
BCAB0065	≥99.50	≥99.90	≥99.98	≥99.99	≥99.99	≥99.99	≥99.99	≥99.99
BCAB0080	≥99.20	≥99.50	≥99.90	≥99.98	≥99.99	≥99.99	≥99.99	≥99.99
BCAB0100	≥99.00	≥99.20	≥99.50	≥99.90	≥99.98	≥99.99	≥99.99	≥99.99
BCAB0300		≥99.00	≥99.20	≥99.50	≥99.90	≥99.98	≥99.99	≥99.99
BCAB0400			≥99.00	≥99.20	≥99.50	≥99.90	≥99.98	≥99.99
BCAB0500				≥99.00	≥99.20	≥99.50	≥99.90	≥99.98
BCAB0600					≥99.00	≥99.20	≥99.50	≥99.90
BCAB0700						≥99.00	≥99.20	≥99.50
BCAB1000							≥99.00	≥99.20
BCAB2000								≥99.00

Tested by ISO 12103-1 A4 Coarse Test Dust

Ordering Information

BCAB	Removal Ratings	End Cap	Nominal Length	Seal Material	-F
[Φ71]	0020 =0.2µm 0400 =4.0µm	DOE =Double Open End	05 = 5"	S =Silicone	
	0030 =0.3µm 0500 =5.0µm	HTC =222 O-ring/Flat (PBT Insert)	10 =10"	E =EPDM	
	0050 =0.5µm 0600 =6.0µm	HTF =222 O-ring/Fin (PBT Insert)	20 =20"	V =Viton	
	0065 =0.65µm 0700 =7.0µm	HSF =226 O-ring/Fin (PBT Insert)	30 =30"		
	0080 =0.8µm 0800 =8.0µm	SSF =226 O-ring/Fin (SS Insert)	40 =40"		
	0100 =1.0µm 1000 =10µm	SSC =226 O-ring/Flat (SS Insert)			
	0300 =3.0µm 2000 =20µm	STF =222 O-ring/Fin (SS Insert, 3 Tabs)			