

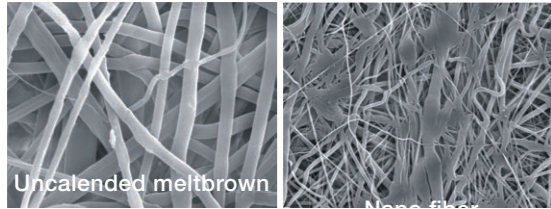
Absoguard® Filter Cartridges

Absolute Rated Polypropylene-Pre-filter for Liquids

Absoguard® Filter Cartridges are composed of a polypropylene membrane. Characteristics include absolute-rated membrane with high dirt holding capacity, long service life, and extremely high flow rates. They provide efficient retention of particles in critical applications.

Features and Benefits

- Pleated surface provides superior flow rate and extended service life.



- Nano fiber media provides excellent particle retention and filtration performance
- 100% all polypropylene construction provides wide chemical compatibility

Quality Standards

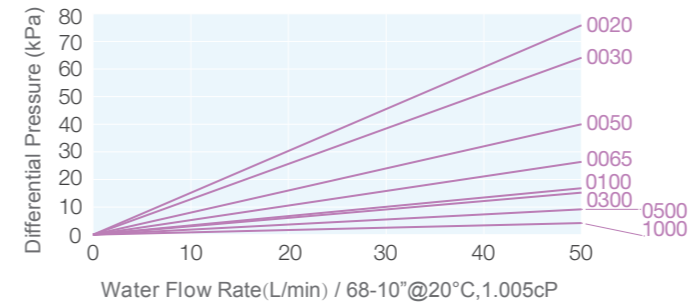
- Manufactured in a facility which adheres to ISO 9001:2015 Practices .
- Full Regulatory Compliance with following :
 - Bacterial Endotoxin :Aqueous extraction of autoclaved filter contains <0.25 EU/ml as determined by Limulus Amebocyte Lysate (LAL),USP<85>.
 - Non-fiber Releasing :Component materials meet the criteria for a " Non-fiber-releasing filter " as defined in 21 CFR 210.3(b)(6).
 - Component Material Toxicity :Meet the requirement of USP <87> In Vitro Cytotoxicity Test ; Meet the Criteria of USP<88> Biological Reactivity Test for Class VI-121 C plastics
 - TOC/Conductivity at 25 °C : Autoclaved filter effluent meet the USP<643> for Total Organic Carbon and USP<645> for Water Conductivity per WFI requirements after a UPW flush of specified volume .
 - Particle Shedding : Autoclaved filter effluent meet the USP<788>for large volume Injections .
 - Indirect Food Additive: All component materials meet the FDA Indirect Food Additive requirements cited in 21 CFR 177-182 ,and EU framework regulation [1935/2004/EC].

Typical Applications

- API
- Blood Products
- Cell Cultures
- Gel Materials



Flow Rate Characteristics



Materials of Construction

Filter Media	Polypropylene
Support	Polypropylene
Core/Cage/End Caps	Polypropylene

Operating Conditions

Max. Operating Pressure	6.9 bar (100 psi) at 25 °C 4.0 bar (58 psi) at 60 °C 2.4 bar (35 psi) at 80 °C
Max. Differential Pressure	Forward 6.9 bar (100 psi) at 25 °C 4.0 bar (58 psi) at 60 °C 2.4 bar (35 psi) at 80 °C Reverse 3.0 bar (44 psi) at 25 °C 1.0 bar (15 psi) at 80 °C
Effective Filtration Area	0.37-0.68m ² / Φ 71-10 inch

Sterilization

Inline Steam Sterilization	Up to 20 cycles (135 °C for 30 min (< 0.3 bar per cycle)
-----------------------------------	---

Ordering Information

APP	Removal Ratings	End Cap	Nominal Length	Seal Material	-P
	0030=0.3µm	HSF=226 /Fin (PBT Insert)	05=5"	S=Silicone	
	0065=0.65µm	HSC=226 /Flat (PBT Insert)	10=10"	E=EPDM	
	0080=0.8µm	HTF=222 /Fin (PBT Insert)	20=20"	V=Viton	
	0100=1.0µm	HTC=222 /Flat (PBT Insert)	30=30"	P=PFA/Viton	
	0300=3.0µm	DOE=Double Open End	40=40"		
	0500=5.0µm				
	0700=7.0µm				
	0100=1.0µm				
	0800=8.0µm				
	1000=10µm				
	2000=20µm				